



USGS OFR-01-0144 photo of Caraballeda, debris flow of "an estimated 1.8 million tons." Thousands died as their homes and apartment buildings were destroyed.

This debris flow is similar to the 3.3 million tons or 2,300,000 cubic yards from a 1969 Cucamonga storm. The flood structures that captured this debris in 1969, were destroyed to build your homes.

Don't be fooled by anyone claiming the Cucamonga Flood Basin provides safety for your family. It could only be built to hold 600 acre feet. Advance plans and preparation could save you critical minutes.

Evacuating is the only safe option for you and your family. If you are caught in a debris flow, there is little that can be done. Opening doors and windows on the downhill or south side of your home gives only additional seconds for you to get to the highest, downhill part of your home.

ABOUT US

MISSION:

We're here to provide information so you can protect your family and property from dangerous flooding.

BACKGROUND:

As a former schoolteacher and local homeowner, I believe we should have better protections for our families in a region that has historically faced major flooding and debris flows. Developers have removed significant protections such as levees and spreading basins that were meant to keep us safe, and today there are no flood evacuation plans for our schools and neighborhoods under the Cucamonga Peak. We can prevent disaster with a few simple actions now. Join me in creating a safer future by being prepared.

-Marylinda

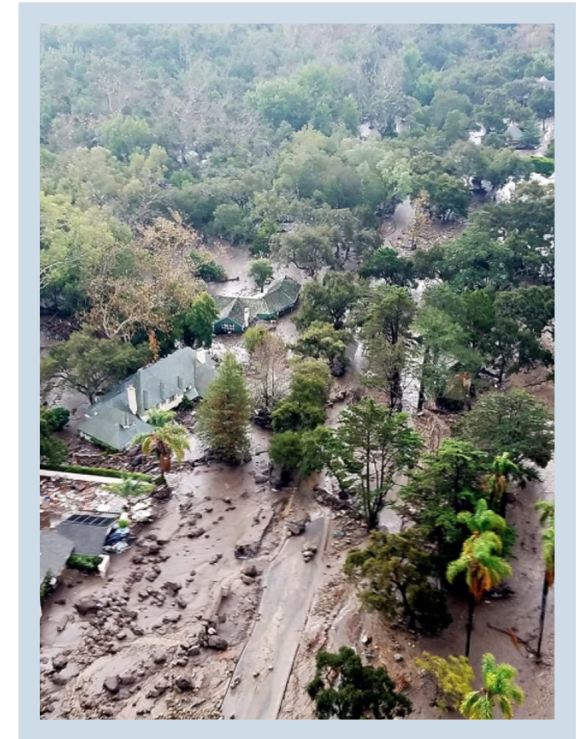
CUCAMONGA FLOODS

A community safety resource.

CucamongaFloods@Gmail.com

www.CucamongaFloods.org

THE COLONIES



*DON'T BE ANOTHER
MONTECITO!*

~CUCAMONGA FLOODS~
A community safety resource.



Rancho Cucamonga, Alta Loma, Ontario & Upland sit directly on major alluvial fans.

EVACUATIONS

Prepare yourself now.

Remember The Colonies' area is much more dangerous than L.A. watersheds. Montecito's boulders were smaller, and their mudflows were less than 30 mph.

What a contrast to Cucamonga!

Cucamonga's "biggest" boulders have been 30+ feet and the "median" size boulders are over 8 feet. Debris mudflows on Cucamonga Peak's high, steep slopes exceeded 60 mph.

Don't risk staying in your home during a Cucamonga Creek debris flow.

Ensure an EVACUATION WARNING SYSTEM is in place. Request that your city develop a real plan and inform residents.

Even systems similar to tornado warning systems can be put in place for a few thousand dollars.

WHAT CAN WE DO TO PROTECT OURSELVES?

MONITORING RAINFALL AT ELEVATION provides the best warning. Since rainfall on Cucamonga Peak can be several times that measured at the Colonies, demand monitoring at the 5000 foot level or that the existing high elevation Deer Creek Monitoring station be publicly available in real-time at an online web site such as *San Bernardino County Flood*

CHECK ON FLOOD INSURANCE:

Contact your own current homeowner insurance agent. If your agent doesn't sell FEMA insurance, call FEMA Help Center at 1-800-427-4661. FEMA insurance costs \$405 a year for the maximum \$350,000 coverage. If you are not insured, average FEMA payout is \$5,000; max is \$33,000.



Katie Falkenberg / Los Angeles Times

CONTACT YOUR SCHOOL BOARD:

Your local school board needs to know that this is an issue you care about. There are 11 schools in the direct path of these potential mudslides. Make sure your school has closure and evacuation plans in place that will be able to save lives in the event of an emergency. *Contact: Upland School District Supervisor Nancy Kelly (909) 985-1864*



LET YOUR VOICE BE HEARD:

Your regional and community leaders have the ability to make great change by enacting safety measures.

Contact:

Upland Mayor Debbie Stone:
debbiestoneforupland@gmail.com

Upland City Manager Bill Manis:
citymanager@ci.upland.ca.us.

